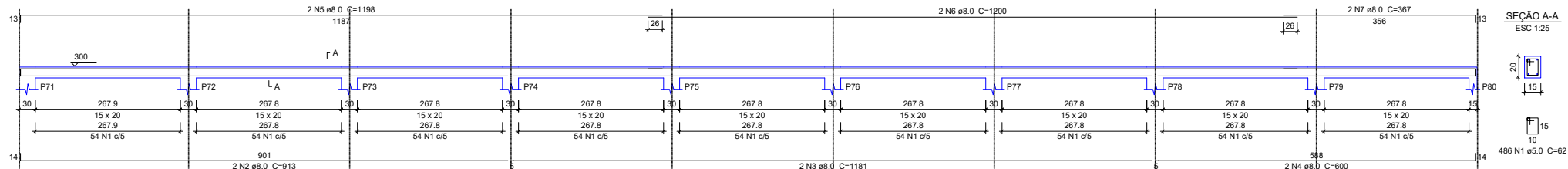


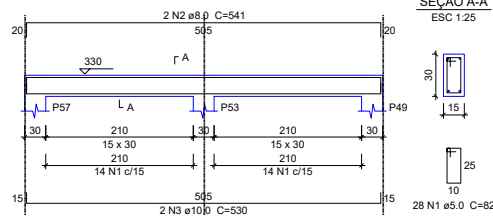
VC6

ESC 1:50



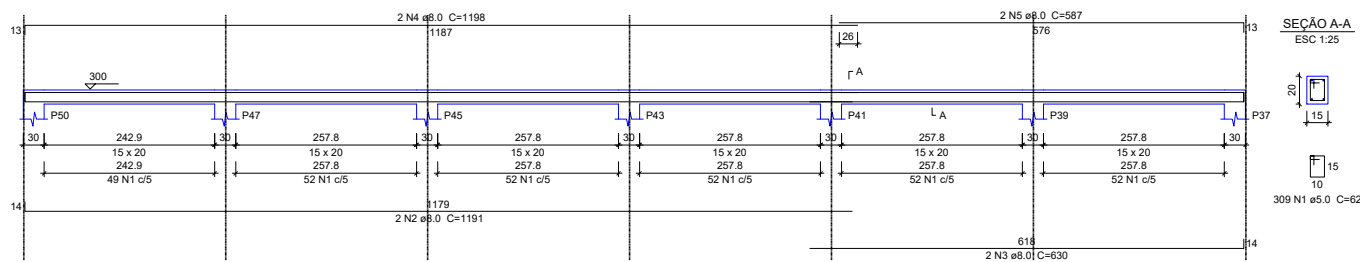
VC7

ESC 1:50



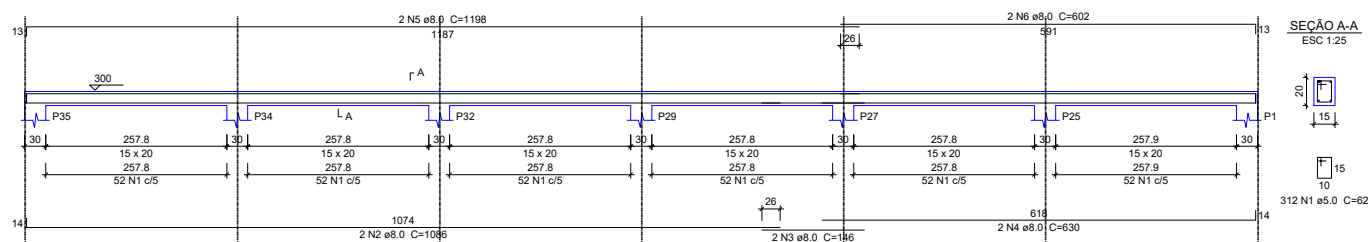
VC8

ESC 1:50



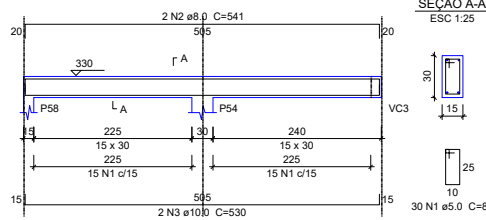
VC9

ESC 1:50



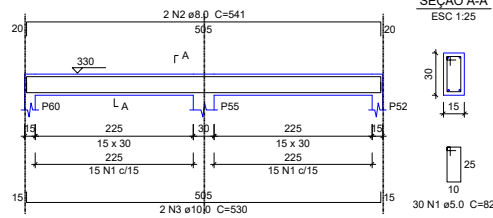
VC10

ESC 1:50



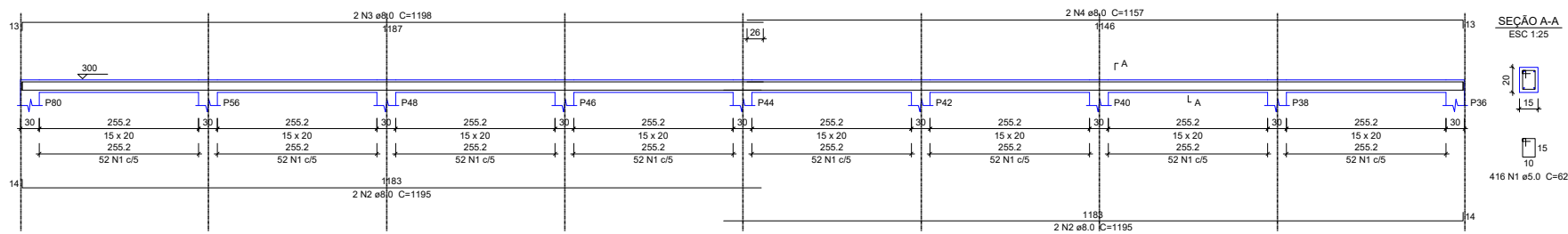
VC11

ESC 1:50



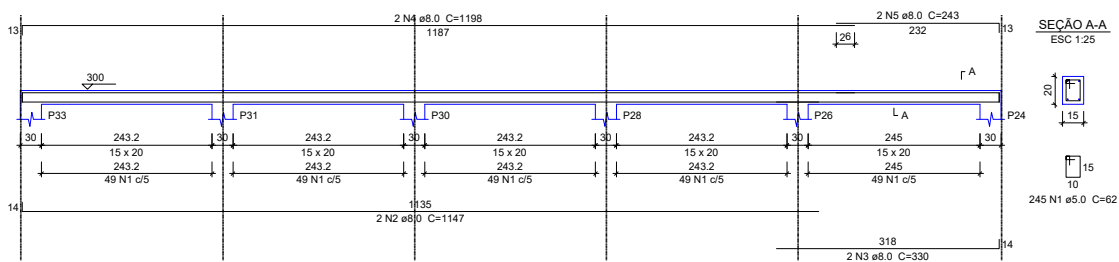
VC12

ESC 1:50



VC13

ESC 1:50



Relação do aço

ELEMENTO	AÇO	N	DIAM	Q	UNIT (cm)	C.TOTAL (cm)
VC1	CA60	1	5.0	561	62	34782
	CA50	2	8.0	2	1135	2270
	CA50	3	8.0	2	1120	2240
	CA50	4	8.0	2	867	1734
	CA50	5	8.0	2	1198	2396
	CA50	6	8.0	2	1200	2400
VC2	CA50	7	8.0	2	795	1590
	CA60	1	5.0	561	62	34782
	CA50	2	8.0	2	1150	2300
	CA50	3	8.0	2	1120	2240
	CA50	4	8.0	2	852	1704
	CA50	5	8.0	2	1198	2396
VC3	CA50	6	8.0	2	1200	2400
	CA50	7	8.0	2	795	1590
	CA60	1	5.0	52	82	4264
	CA50	2	8.0	2	872	1744
	CA50	3	10.0	2	861	1722
	CA60	1	5.0	50	82	4100
VC4	CA50	2	8.0	2	872	1744
	CA50	3	10.0	2	861	1722
VC5	CA60	1	5.0	486	62	30132
	CA50	2	8.0	2	913	1826
	CA50	3	8.0	2	1181	2362
	CA50	4	8.0	2	615	1230
	CA50	5	8.0	2	1198	2396
	CA50	6	8.0	2	1200	2400
VC6	CA50	7	8.0	2	382	764
	CA60	1	5.0	486	62	30132
	CA50	2	8.0	2	913	1826
	CA50	3	8.0	2	1181	2362
	CA50	4	8.0	2	600	1200
	CA50	5	8.0	2	1198	2396
VC7	CA50	6	8.0	2	1200	2400
	CA50	7	8.0	2	367	734
	CA60	1	5.0	28	82	2296
	CA50	2	8.0	2	541	1082
	CA50	3	10.0	2	530	1060
	CA60	1	5.0	309	62	19158
VC8	CA50	2	8.0	2	1191	2382
	CA50	3	8.0	2	630	1260
	CA50	4	8.0	2	1198	2396
	CA50	5	8.0	2	587	1174
	CA60	1	5.0	312	62	19344
	CA50	2	8.0	2	1086	2172
VC9	CA50	3	8.0	2	146	292
	CA50	4	8.0	2	630	1260
	CA50	5	8.0	2	1198	2396
	CA50	6	8.0	2	602	1204
	CA60	1	5.0	30	82	2460
	CA50	2	8.0	2	541	1082
VC10	CA50	3	10.0	2	530	1060
	CA60	1	5.0	30	82	2460
VC11	CA50	2	8.0	2	541	1082
	CA50	3	10.0	2	530	1060
VC12	CA60	1	5.0	416	62	25792
	CA50	2	8.0	4	1195	4780
VC13	CA50	3	8.0	2	1198	2396
	CA50	4	8.0	2	1157	2314
	CA60	1	5.0	245	62	15190
	CA50	2	8.0	2	1147	2294
	CA50	3	8.0	2	330	660
	CA50	4	8.0	2	1198	2396
	CA50	5	8.0	2	243	486

Resumo do aço

AÇO	DIAM	C.TOTAL (m)	PESO (kg)
CA50	8.0	837.6	330.5
	10.0	66.3	40.8
CA60	5.0	2249	346.6
PESO TOTAL			
CA50	371.3		
CA60	346.6		

Vol. de concreto total (C-25) = 7.1 m³
Área de forma total = 127.83 m²

VIGA COBERTURA

ESC.: 1/200



PREFEITURA MUNICIPAL DE
VÁRZEA GRANDE
Mais por Você. Mais por Várzea Grande.

PREFEITURA MUNICIPAL DE VÁRZEA GRANDE

Av. Castelo Branco, Espaço Municipal, 2500 - Centro Sul, Várzea Grande/MT CEP 78125-700 - Fone/Fax: 65 3688 8000

PROJETO: PROJETO ESTRUTURAL
OBRA: REFORMA E AMPLIAÇÃO
UNIDADE ESCOLAR: EMEB PROFª LÍBIA DA COSTA RONDON

ASSUNTO: VIGA COBERTURA
LOCALIZAÇÃO: AVENIDA PRINCIPAL S/N
CEP: 78110798 BAIRRO: 24 DE DEZEMBRO VG-MT

AUTOR DO PROJETO:

ANA PAULA BOTELHO
ENGENHEIRA CIVIL CREA-MT 50821

UNIDADE:

METRO

ESCALA:

Indicada

DATA:

MARÇO/2022

FOLHA Nº

06/10